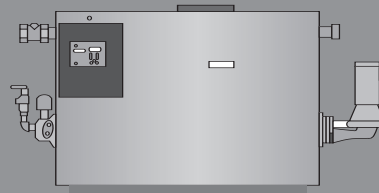


# blue is efficient

Programs for the acquisition of more efficient equipments

- Commercial
- Institutional
- Industrial
- 4 apartments or more



Intermediate efficiency water heater

End use objective: water heating applications

## > 75 000 Btu/hr

These water heaters offer thermal efficiency greater than the minimum required standard. These appliances are characterized by more effective heat exchange between combustion gases and the water to be heated.

## AUTHORIZED MINIMUM EFFICIENCY

Thermal efficiency: 78%

Minimum efficiency for Gaz Métro programs:

Thermal efficiency: 85% <sup>1</sup>

1 Appliances with an efficiency rating of 90% or more that also feature a secondary heat exchanger with an optional hook-up are eligible for financial assistance through the Intermediate efficiency water heater program.

## FINANCIAL INCENTIVES

Appliance capacity	Financial incentive
75 001 to 300 000 Btu/hr	\$600
300 001 to 325 000 Btu/hr	\$1,000
325 001 to 375 000 Btu/hr	\$1,300
375 001 to 450 000 Btu/hr	\$1,500
450 001 to 550 000 Btu/hr	\$1,800
550 001 to 650 000 Btu/hr	\$2,100
650 001 to 725 000 Btu/hr	\$2,400
725 001 to 900 000 Btu/hr	\$2,700
900 001 to 1 100 000 Btu/hr	\$3,000
1 100 001 to 1 300 000 Btu/hr	\$3,400
1 300 001 to 1 700 000 Btu/hr	\$3,900
1 700 001 to 2 000 000 Btu/hr	\$4,400
2 000 001 to 2 500 000 Btu/hr	\$4,900
2 500 001 to 3 000 000 Btu/hr	\$5,400
3 000 001 Btu/hr or more	\$6,000

To take advantage of this amount, the client must sign a standard contract (> 75 000 m<sup>3</sup>) with their sales representative or conclude a simplified contract (≤ 75 000 m<sup>3</sup>) with a Gaz Métro certified contractor (Gaz Métro Authorized Partner Program).

This financial incentive is applicable supplementary to the CSP/RCSP and can also be applied to retain existing customers. The total amount of the incentives must not exceed admissible expenses. Amounts are subject to change without prior notice.

If more than one unit with a capacity less than 300 000 Btu/hr is installed for the same purpose, the financial incentive is based upon the total capacity installed.

# Equipment list

## Intermediate efficiency water heaters

### → Camus Hydronics Ltd.

Model no:

CERAFLAME CFNW(450, 550, 650)E

DYNAFLAME DFNW(500-3000)E

MICOFLAME MFNW(400-4000)E

### → Laars Heating Systems

Model no:

MIGHTY MAX (V,P)W(0320, 0400, 0520,

0625, 0775, 1000)MN

PENNANT PNCV(500, 2000)

### → Lochinvar

Model no:

COPPER FIN II CFN(401, 501, 651, 751)

COPPER FIN II CFN(0990, 0991, 1260,

1261, 1440, 1441, 1800, 1801, 2070, 2071)

EFFICIENCY(+, PAC) E(W,P)N (150, 200, 250 et 300)

POWER FIN PFN(0500, 0501, 0750, 0751, 1000, 1001)

POWER-FIN PFN(1300, 1500, 1700, 2000)

### → Patterson-Kelley

Model no:

THERMIFIC D-(700-2000)

### → Raypak

Model no:

HI DELTA WH(1, 3, 4) (302, 322, 402,

502, 652, 752, 902)E

HI DELTA WH(3, 4)(122, 162, 202, 242)E

HI DELTA WH(8, 4)992E

HI DELTA WH(9, 4) (1262, 1532, 1802,

2002, 2072, 2342)E

### → RBI

Model no:

DOMINATOR DW(300-2100)

FUTERA II FH(W)N(L)(D)(500, 750, 1000,

1250, 1500, 1750, 1950)

FUTERA III MWN (500-2000)